

# Best truck dispatching software in 2024

optym



Choosing the best truck dispatching software for your business can feel like searching for a needle in a haystack. With the vast array of options in the market, each boasting its unique features, pricing models, and technical specifications, selecting the right one can seem daunting.

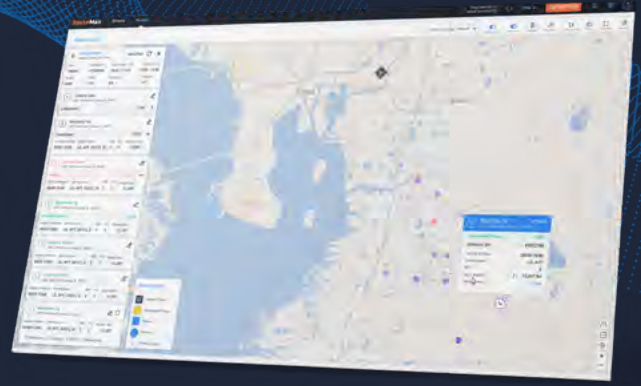
That's why we've gathered the most popular providers for you. In this blog post, we're diving deep into

truck dispatching software solutions, summarizing what each one offers. From customer ratings and standout features to a thorough analysis of the pros and cons, we've got you covered.

Our goal is to equip you with the necessary information to make a good decision for you and your business's unique needs.

# What is Truck Dispatching Software?

At its core, truck dispatching software simplifies the complex process of assigning loads to drivers. These powerful tools are essential for efficient dispatching, ensuring regulatory compliance, keeping a close eye on operations, and evaluating the profitability of dispatch decisions well in advance. Whether you're a small business owner or manage a large fleet, understanding how these solutions can benefit your operation is the first step towards optimizing your dispatching process.



## What are the things you need to consider before purchasing a solution?



### Fleet size and operational complexity

The technological needs of an owner-operator and large fleets are drastically different. As the number of trucks and drivers increases, so does the complexity of your dispatching operations. If you are a small carrier, look for basic back-office features that save you time, like record keeping, invoicing, and reporting.

If you are a large fleet, make sure your solution has an advanced dispatching module that can handle complex routing, scheduling, and real-time tracking of multiple loads and drivers. This module should offer features like automated dispatching, driver communication tools, and integration with telematics to optimize routes and reduce fuel consumption.



### Scalability potential

As your business expands, your technological needs will evolve, so look for solutions that offer modular add-ons or upgrades to enhance functionality as your fleet grows.



### Integration with your current tech stack

Essential for streamlining operations and avoiding data silos. Ensure the dispatching software integrates seamlessly with your Electronic Logging Devices (ELD), fuel cards, accounting platform, load boards, and any other platform or equipment necessary for your operations.



### Implementation and training process

Choose a provider that offers a clear implementation roadmap with timelines for each stage in the process. Dispatchers' training is essential to fully utilize all the software's features, so look for providers with comprehensive training materials, such as manuals, videos, live webinars, and ongoing support to address any issues or questions.



# Top #5 trucking dispatching solutions

## LoadAi



## LoadAi: Best for truckload carriers

LoadAi is truck dispatching software streamline and enhance the process of matching drivers with loads. By considering various factors, such as the specifics of your loads, your drivers' preferences, and their Hours of Service (HOS), LoadAI generates the best possible assignments to reduce empty miles and boost operational efficiency significantly. The solution can integrate with other TMS, making it an excellent option for large carriers that don't want to replace their entire tech stack.

Serves	Customer Ratings	Features
Carriers LTL & FTL	Featured Customers 4.8/5.0 G2 3.5/5 Software Advice 4/5 Capterra 4/5	Automatic load to driver assignments Real-time visibility on loads and drivers Reliable ETAs Route optimization Factoring and invoicing Document Management Mobile App
Integrations		Pricing
ELDs – Motive, Verizon Connect, Geotab, Samsara EDI Load Boards – Truckstop, 123Loadboards, CH Robinson Fuel Cards OTR Solutions Others		Quote based pricing

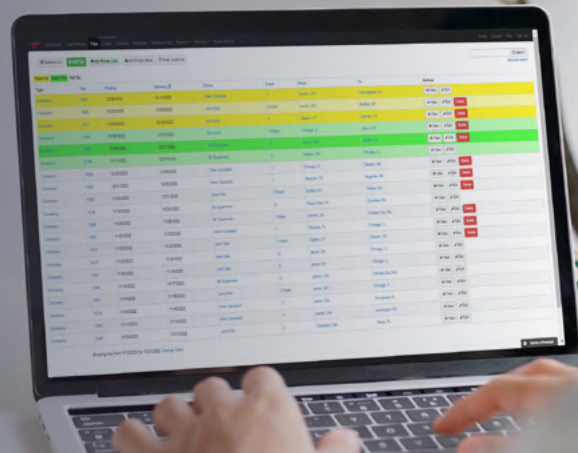
## Advantages

- Automatic load-to-driver assignments.
- Algorithms designed to minimize deadhead and maximize asset utilization
- Profitability predictions based on dispatcher assignments
- There is no need to switch your current TMS to plug in the load optimization engine
- Strong back-office capabilities for invoicing, expense reconciliation, accounting, and reporting
- One-on-one customer support and online guides
- Intuitive interface
- Powerful integrations

## Disadvantages

- Dependence on internet connectivity.
- Disruption recovery optimization (coming soon).
- Doesn't support driver pay rates based on duty type.

# Trucking Office: Best for owner operators and small carriers



Product	Serves	Features
Trucking Office TMS	TL carriers	Dispatching management (ETA Predictions, Task & Alert Notification System, Time off planning, SMS Text Messaging) Load planning (Load selection, Quote evaluation, Trip planning) Reporting (Dashboard, Advance reporting, Trend Analysis, Export to Excel)
Integrations	Customer Ratings	Pricing
Fuel Cards ELD	Capterra – 4.5/5.0  Software Advise – 4.5/5.0	Basic: Owner/Operator- \$20/month 1-2 trucks Mid-Size- \$45/month 3-7 trucks Fleet- \$75/month 8+ trucks Broker- \$45/month unlimited dispatches Pro: Owner/Operator- \$30/month 1-2 trucks Mid-Size- \$65/month 3-7 trucks Fleet- \$110/month 8+ trucks

Trucking Office is a trucking software solution designed to empower small carriers with the tools they need to thrive in a competitive industry. Offering an easy-to-use, effective, and affordably priced platform, it levels the playing field for small to medium-sized trucking businesses. With features that streamline dispatch, invoicing, fleet tracking, and easy compliance, Trucking Office meets the unique challenges of managing day-to-day trucking operations.

## Advantages

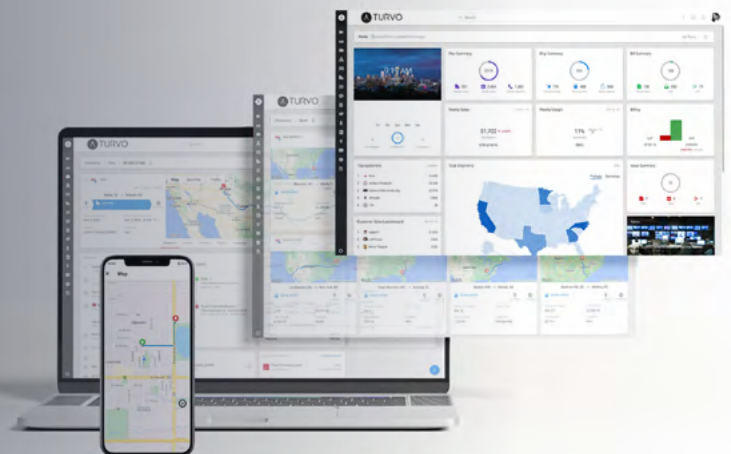
- Accessible pricing and a 30-days free trial.
- A great tool to track your records and for back-office operations.
- Easy to use and understand.

## Disadvantages

- Manual load-to-driver assignments.
- No predictive analytics for trip revenue or costs.
- Manual entry of drivers, expenses, loads, and charges.
- The platform is not scalable.
- Limited integration capabilities.

# Turvo:

## Best for brokers and shippers



Serves	Customer Ratings	Features
Shippers Brokers TL Carriers	Capterra 4.5/5.0 G2 4.5/5.0 Featured customers 4.8/5.0	Automated workflows Driver App Predictive ETAs Reporting (Dashboards, Advance reporting, Trend Analysis) Dispatching (load planning, load assignments) Visibility (live tracking) Document Management
Integrations		Pricing
Load boards Freight indexes Telematics Accounting systems WMS TMS ERP		Quote based pricing

Trimble's TMW.Suite is a comprehensive solution designed for various stakeholders within the trucking industry, offering tools to enhance operational efficiency and effectiveness. It caters to the needs of fuel haulers, brokers/3PLs, and carriers through must-have features like order entry, load planning, tracking, driver management, and dispatching.

TMW.Suite is one of the few providers with a specialized fuel dispatching module, allowing delivery planning teams to monitor tank levels, consumption forecasts, and rack pricing. This module has excellent visibility features like the Dispatch Dashboards Tanks Grid and the Available Loads Grid, and it completely integrates with ordering parties and consignees.

## Advantages

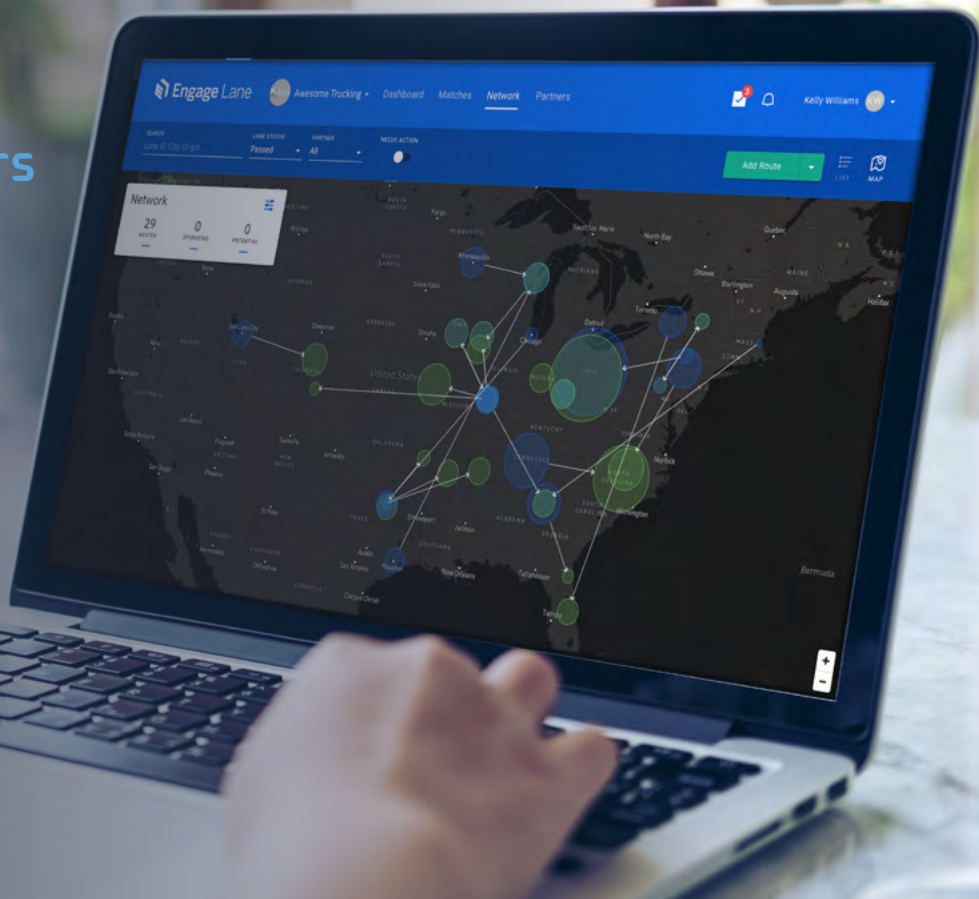
- Comprehensive solution with a wide array of features and functionality.
- Customers can pick between on premise or cloud hosting.
- Some customization through add-on modules.
- Good training and customer support.

## Disadvantages

- **Not a good fit for every carrier:** Product documentation mentions that this solution is scalable to fleets with assets ranging from 20 and up.
- **Complexity for new users:** The comprehensive nature and wide range of functionalities might present a steep learning curve.
- **Dependence on internet connectivity:** A cloud-based solution requires reliable internet connectivity, which could be a limitation in areas with poor connectivity.
- Manual load to driver assignment.
- Software tends to be slow (Customer Reviews Feedback Link).

# TMW.Suite:

## Best for Fuel Haulers





Product	Serves	Features
TMW.Suite	20+ Fleets Brokers, Carriers, Fuel Haulers, Private fleets LTL & FTL	Freight visibility Accounting features Mapping and mileage Fleet management features Document Management Network expansion tools Fuel Tax Mobile App Payroll interface
Integrations	Customer Ratings	Pricing
EDI  Fuel Card	Capterra – 3.7/5.0 G2 3.5/ 5 Software Advise – 3.5/5.0	\$1000/Per Month or Enterprise pricing

Trimble's TMW.Suite is a comprehensive solution designed for various stakeholders within the trucking industry, offering tools to enhance operational efficiency and effectiveness. It caters to the needs of fuel haulers, brokers/3PLs, and carriers through must-have features like order entry, load planning, tracking, driver management, and dispatching.

TMW.Suite is one of the few providers with a specialized fuel dispatching module, allowing delivery planning teams to monitor tank levels, consumption forecasts, and rack pricing. This module has excellent visibility features like the Dispatch Dashboards Tanks Grid and the Available Loads Grid, and it completely integrates with ordering parties and consignees.

## Advantages

- Comprehensive solution with a wide array of features and functionality.
- Customers can pick between on premise or cloud hosting.
- Some customization through add-on modules.
- Good training and customer support.

## Disadvantages

- **Not a good fit for every carrier:** Product documentation mentions that this solution is scalable to fleets with assets ranging from 20 and up.
- **Complexity for new users:** The comprehensive nature and wide range of functionalities might present a steep learning curve.
- **Dependence on internet connectivity:** A cloud-based solution requires reliable internet connectivity, which could be a limitation in areas with poor connectivity.
- Manual load to driver assignment.
- Software tends to be slow (Customer Reviews Feedback Link).



# McLeod LoadMaster:

Best integrating with other systems



Serves	Customer Ratings	Features
Brokers & Carriers LTL & FTL	Capterra 4.5/5.0 G2 4.5/5.0 Featured customers 4.8/5.0	Automated workflows Driver App Predictive ETAs Reporting (Dashboards, Advance reporting, Trend Analysis) Dispatching (load planning, load assignments) Visibility (live tracking) Document Management
Integrations		Pricing
Load boards Dispatch Optimization Dispatch Freight Matching ELD Fuel cards Factoring Accounting Mapping (Trailer tracking, shipment visibility, video safety) Rate index		\$1000/Per Month or Enterprise pricing

LoadMaster by McLeod Software is a comprehensive transportation management solution for trucking carriers. It offers a robust suite of features, including dispatch operations, load planning, driver management, financial management, and safety compliance. It has over 30 functional modules and can integrate with more than 100 systems. It enhances operational efficiency, simplifies financial processes, and ensures regulatory compliance for trucking companies. Its scalable architecture and optional add-ons cater to the unique needs of each carrier, making it a versatile tool for optimizing truckload transportation operations.



## Advantages

- Comprehensive solution with a wide array of features and functionality.
- Customers can pick between on premise or cloud hosting.
- +180 integrations.
- Scalable solution through optional add-on modules .

## Disadvantages

- The user interface needs improvement.
- Training and software documentation.
- Some must-have features like trailer tracking and trip management are only available as add-ons.

## Last thoughts

Choosing the right truck dispatching software in 2024 comes down to understanding your business's needs. Whether it's LoadAi's load matching, Trucking Office's simplicity for small carriers, Turvo's connectivity for brokers, TMW Suite's specialized solutions for fuel haulers, or McLeod Load-

Master's smooth integrations, each option has its strengths. The goal is to find software that fits your current operations and can grow with you. This guide is here to help you cut through the clutter and make a choice that boosts your efficiency and bottom line.

